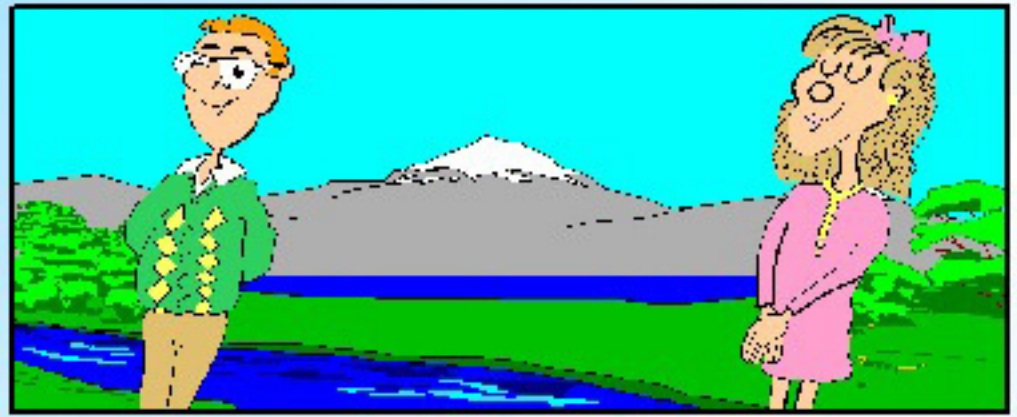
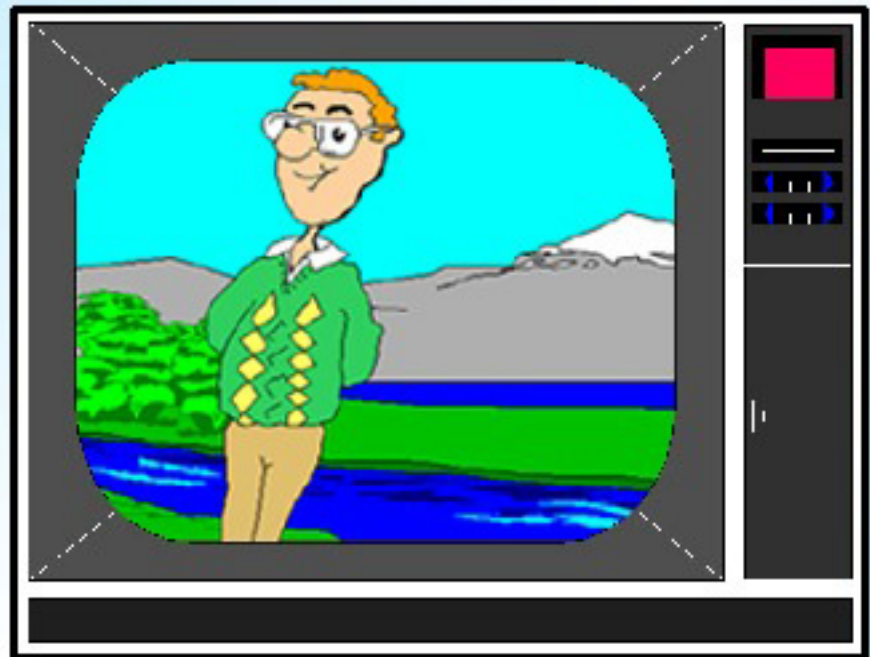


What Is Widescreen?

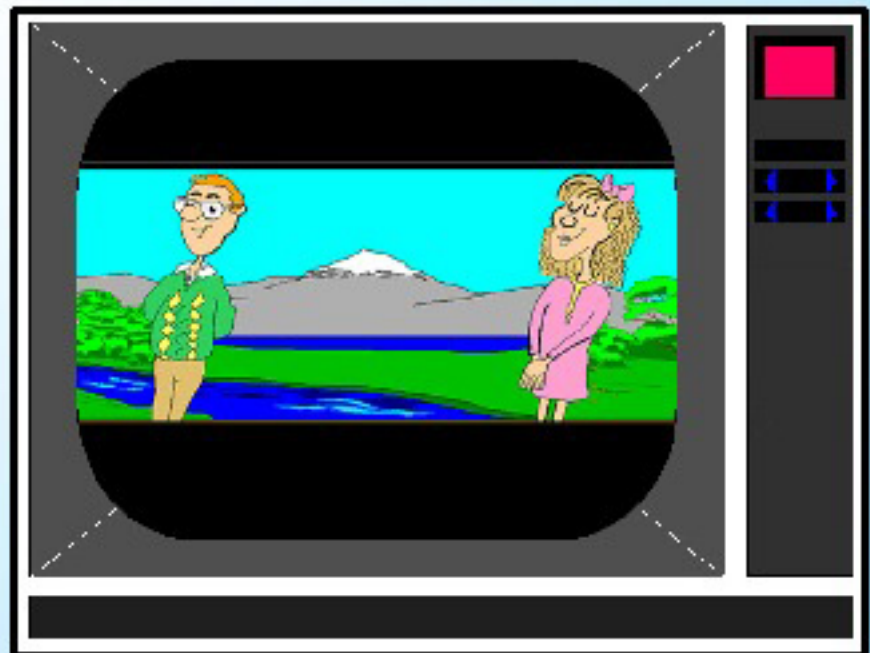
A large number of movies are made in an aspect ratio of 2.35:1 where the movie is 2.35 times as wide as it is high, resulting in a panoramic effect.



However, most televisions have an aspect ratio of 1.33:1, also called 4:3, where the screen is 1.33 times as wide as it is high, resulting in a less rectangular viewing area. As a result, widescreen movies are often cropped, resulting in the loss of up to 50% of the original visuals.



In order to display the movie the way that it is intended to be seen, the visual image is reduced so that the width of the movie matches the width of the screen. This results in what are incorrectly referred to as "black bars". It does, however, show the movie the way that it was shown in theaters and in the format that the movie makers intended.



© 2003 John L. Berger - The Letterbox & Widescreen Advocacy Page - <http://www.widescreen.org>
No part of this document may be altered. You may print and distribute this flyer freely as long as none of its contents are modified in any way and no additional information is added.

So, as you can see, even if you have a full TV screen you are not necessarily seeing the full image. With a full TV screen, you are actually losing information that would otherwise be seen.

**To have a truly "full screen",
make sure that you request widescreen videos and DVDs !**